

Giftmakers to the Earth



Climate Field School for Cacao Farmers in Soppeng



DUNGBEETLE AND GREEN
SCHOOL SUPPORT SU-RE.CO
BIOGAS PROJECT IN BALI

Measuring Carbon
Sequestration in Bali's
Agroforestry Landscapes

Giftmakers.

CEO Dr. Takeshi Takama

Researchers Cynthia Juwita Ismail,
Fabian Peri Wiropranoto, Siti Nurlaila
Indriani, Imelda Magdalena,

Office Manager Oktavianna Winda

Engineering Officer Bianca Angelique

Engineering Mentee Katharina Gruteser,
Lilli-Mercedes Kaminsky, Lucile Adjahi

General Affairs Officer Emilia Widodo

Admin Hanna Husna

Media and Event Officer Hendiliana
Dewi

OPERATIONAL OFFICES

Jalan Dalem Gede No 25, Banjar Jempinis,
Pererenan, Mengwi, Badung, Bali, Indonesia

info@su-re.co

+62 8123831727

A man with a mustache, wearing a blue button-down shirt, stands in a lush green field. He is looking slightly to his right. The background is filled with tall green plants and trees, creating a natural, outdoor setting.

Table of Contents

01 Think-Tank

04 Do-Tank

07 Be-Tank

11 Gifts We Make

13 Be A Giftmaker

THINK-TANK

Measuring Carbon Sequestration in Bali's Agroforestry Landscapes



Photo : su-re.co

su-re.co giftmakers have just conducted soil sampling in four locations in Bali, Indonesia on 31st May 2023, to study the impact of agroforestry practices and bio slurry application on carbon sequestration and climate mitigation. This activity is part of the LANDMARC project funded by the European Union's Horizon 2020 programme. After getting the result from the first soil sampling conducted last year, this second soil sampling was planned to follow up on the previous result.

The team visited organic and non-organic arabica coffee farms and a Pongamia farm in Pelaga, Catur, and Songan B village. They collected soil samples from different farms to assess the soil biogenic.

su-re.co will analyze the soil biogenic and compare them with remote sensing data in collaboration with Bioclear and Agroinsider to estimate the carbon sequestration potential of different agroforestry systems. su-re.co will also engage with local stakeholders, such as farmers, government officials, and NGOs, to understand their perspectives and preferences on land use and climate action. Stay tuned for more updates on their fascinating work!

**Join our
THINK –
Research Team**



A full-time position for Researcher. Are you passionate about research and keen to further develop your skill? This opportunity is the one you're looking for!

su-re.co's THINK team works on creating well-thought gifts in the realm of climate change, renewable energy, and green business. Get the experience to work remotely in a multicultural environment and to work with international experts! Details information can be read on our website.

 **APPLY NOW**



Photo : su-re.co





THINK-TANK

CIFOR-ICRAF CEO visited coffee and vanilla farm in Bali

Photo : Nomad Eng Films

The CEO of CIFOR-ICRAF, Eliane Ubalijoro, joined us for a field visit to Yore Farmland, a coffee and vanilla farm in Pelaga, Bali, on 27th May 2023. The visit was part of the collaboration between CIFOR-ICRAF and su-re.co in an upcoming forestry project.

During the visit in the morning, we explored the coffee farm and observed the farm management, cultivation and processing of organic arabica coffee and vanilla. We also had a coffee-tasting session and enjoyed the aroma and flavor of the local produce.

The field visit was an opportunity for the partners to exchange knowledge and experiences on benefits of agroforestry practices for farmers, consumers, and the environment. It was also a chance to assess local practice and knowledge, then strengthen the partnership and explore new possibilities for future collaboration.



Photo : Nomad Eng Films

Did you know?

Agroforestry is one of su-re.co's focus in promoting climate-smart agriculture and land mitigation!



Photo : Nomad Eng Films



Photo : Nomad Eng Films



Photo : su-re.co

THINK-TANK

Welcoming Directorate of KTI Bappenas at our office

A delegation of eight members from the Directorate of Electricity and Information Technology (KTI), Ministry of National Development Planning (Bappenas) visited the su-re.co office on 23rd May 2023. The visit was part of the ongoing collaboration between Bappenas and su-re.co to support policy-making through policy dialogues.

During the visit, the delegation and the su-re.co team discussed the plan for the following policy dialogue, which will focus on giving feedback on the first run of the energy and land model. We also exchanged views and experiences on the challenges and opportunities of decarbonisation projects in Indonesia.

su-re.co and Bappenas plan to hold another policy dialogue this year and invite relevant government, academia, civil society, and private sector stakeholders. We hope that the policy dialogue will result in actionable recommendations and inputs for the Indonesian policy or development plan.



Photo : su-re.co



Photo : Cargill

Biogas is a clean and renewable energy source generated from the decomposition of organic materials such as animal manure and agricultural waste. The biogas system installed on the farmers' farms will help reduce their dependence on fossil fuels, lower greenhouse gas emissions, and store more carbons in the soil, contributing to a more sustainable agriculture sector.

The success of the biogas project in Soppeng is expected to inspire more farmers in the region to adopt sustainable farming practices and reduce their impact on the environment.

DO-TANK

The first su-re.co biodigester in Sulawesi

Two cacao farmers in Marioriwawo, Soppeng, a South Sulawesi district known for its cacao production, recently received biogas support. This biogas installation is the implementation of climate mitigation practices. It is a new technology in this village, which attracts many people to come and see the biogas installation.



Photo : Cargill

Dungbeetle and Green School support su-re.co biogas project in Bali

Dungbeetle, a social project initiated by Green School students, has supported su-re.co in its biogas project in Bali. Dungbeetle has funded more installations of biogas digesters for farmers in Ekasari village, Jembrana.

The three farmers who received the biogas digesters are Wayan Warsana, I Ketut Widana, and Nyoman Rimbawa. They are among the beneficiaries of su-re.co's project that aims to promote low-carbon development and climate resilience in rural communities.





Photo : su-re.co

DO-TANK

Climate-Smart Vanilla Export to Japan

Another 30 kg of dried vanilla has been shipped for Kaldi in Japan. The people in Japan will soon enjoy this climate-smart vanilla!

su-re.co has partnered with Kaldi in marketing climate-smart products from local farmers in Bali. We are happy for this partnership and hope this will continue making an impact!

Transferring Knowledge and Skill on Climate Change

To jointly build a stronger and sustainable future for agriculture, su-re.co partnered with Cargill, a global food and agriculture company, The Meteorology, Climatology, and Geophysics Agency (BMKG), and agtech company, Koltiva, to hold a Climate Field School training of trainers (CFS ToT) in Marioriwawo District, Soppeng Regency in South Sulawesi



The training aimed to equip Koltiva trainers and agricultural extension workers with the skills and knowledge to adapt to climate change's impacts and improve their farms' sustainability practices. The training of trainers event, held on 7th March 2023, at the Marioriwawo Sub-district Office, was attended by 12 participants. They were trained in climate knowledge, how to use weather information, climate-smart agriculture techniques, and also about biogas digesters.

The BMKG officers, from Climatology Station Bali and Maros, provided training on interpreting weather information and using it to make informed decisions on planting, harvesting, and other farm activities. su-re.co then presented about biogas, its benefits, and how to install, use, and conduct troubleshooting.

We wrapped up the ToT with a visit to the cacao field to see the real problems found on the farm and to tag these trees as a study case for farmers on the CFS.

BE-TANK

Climate Field School for Cacao Farmers in Soppeng

Continuing the training in Soppeng, we did Climate Field School (CFS) specifically for cacao farmers on 8th March 2023. The program aimed to educate 30 cacao farmers on climate knowledge, plantation management, and improve their farming practices and adapt to the impacts of climate change.



Photo : su-re.co



Photo : su-re.co



Photo : Cargill

The CFS, held at the Sub-district office of Mario Riwawao, focused on sustainable agriculture practices, climate-smart agriculture techniques, and the use of technology to improve crop management. The partners provided training and support to help the farmers develop the skills and knowledge they need to thrive in a changing climate. Some data collection to assess agroforestry in this location was done as well.

The success of the Climate Field School program in Mario Riwawao is expected to inspire more farmers in the region to adopt sustainable farming practices and improve their livelihoods.



カカオポッド



カカオの収穫



カカオ豆のかんそう



どちらの農家さんがより良い収入が得られるでしょうか？

お店で売られているカカオ豆の出来上がり



カカオポッド



カカオの収穫



カカオ豆のはっこう



カカオ豆のかんそう



お店で売られているカカオ豆の出来上がり

BE-TANK

Japanese students learn about cacao and Indonesian culture

Students from Teikyo Elementary School in Japan are excited to learn about cacao and Indonesian culture through an online program with su-re.co and Tigermov.

In the first session, they received a video message from Pak Gede Suartama, a cacao farmer in Jembrana, Bali, who shared his challenges and experiences growing and harvesting cacao.

The students also learned about Indonesian culture, such as the language, and the traditional game of *domikado*. They practiced some basic greetings and

phrases in Indonesian and tried to play *domikado* with their friends.

The students were inquisitive about cacao and asked many questions about Pak Gede and the su-re.co team. They also did some research on their own about cacao and its benefits. They will propose solutions to help cacao farmers improve their livelihoods and well-being.

The kids are working on ideas to help cacao farmers. Stay tuned for the updates!



Japanese NPO visits Bali to learn about agroforestry and sustainability

Four members of Living in Peace, a Japanese NPO that partners with su-re.co, visited the island on 4th May 2023 to learn about coffee and sustainability issues. They made a video to spread awareness of climate change in Japan.

The four members of Living in Peace visited a coffee farm in Pelaga village, where they met Wawan, a coffee farmer who works with su-re.co. They learned about the cultivation and processing of organic arabica coffee and cacao, as well as the challenges and opportunities faced by the farmers.

The members made a video to document their experience and share it with their audience in Japan. They wanted to raise awareness of the impact of climate change on coffee production and the importance of supporting sustainable and fair trade practices.

The visit was part of the ongoing collaboration between Living in Peace and su-re.co to promote climate change education and climate-smart products to the Japanese market. We hope our exchange will foster cross-cultural understanding and friendship between the people from both countries.

The partners plan to continue cooperating and develop new projects that benefit farmers and consumers.



BE-TANK

Clark Memorial High School Students Join SDG Online Class

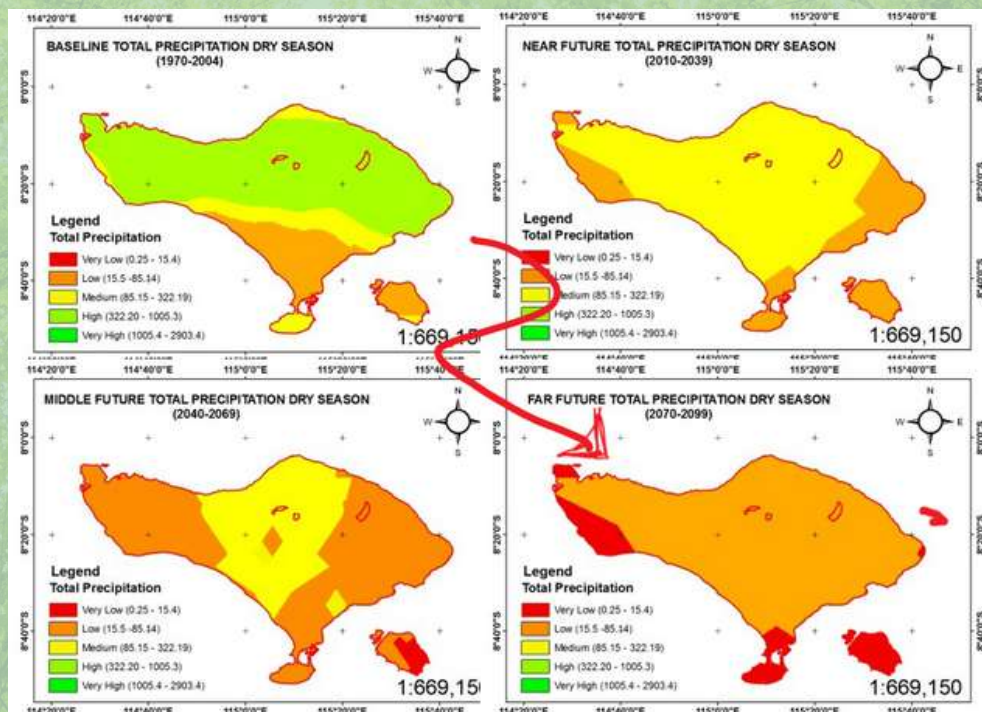
More than 80 students from Clark Memorial High School in Japan are participating in an online class on Sustainable Development Goals (SDGs) hosted by Tigermov and su-re.co.

The online class, which started on 18th May 2023, is held every Thursday and covers various SDG topics, such as waste management, water, coffee and cacao, cooking stove, and forestry. The students learn about the challenges and opportunities of these topics and

will later choose to focus on one topic that they are interested in.

The class is part of a larger initiative by Tigermov and su-re.co to raise awareness and engagement among young people on SDGs and to foster a culture of creativity and collaboration for a better future. We hope the class will inspire the students to act in their communities and beyond.

"I appreciate you making us realize that there are a lot of problems. Your presentations are so interesting." - Class participant



Gifts We Make

Get a taste of our climate-smart products from Indonesian farmers using organic fertilizer and clean energy from our biogas

Climate-Smart su-re.cocoa

Bright and fruity character of 65% dark chocolate from Tabanan - Bali with coffee beans inside

50 gr 25 gr



Climate-Smart su-re.coffee

A fully washed and medium roasted Arabica from Bajawa, Flores with sweet aromatics, fruity notes, and long chocolate finish

250 gr 50 gr

Climate-Smart su-re.coffee Kintamani

An aromatic and sweet flavor coffee with the taste of combination between fruit and herb. Fully washed and medium roasted Arabica from Kintaman, Bali

250 gr 50 gr



Find our product
Click here to visit our shop!



Organic Products

We also provide nuts, beans, and spices that is also supporting the development of sustainable agroforestry value chains

Climate-Smart Dried Vanilla Beans 1 Kg

Organic grade-A prime vanilla beans from Jembrana-Bali offer beautiful floral aroma and cherry-chocolate like flavor



Climate-Smart Cloves 1 Kg

100 % natural and high quality cloves from Leihitu Barat, no use of pesticides or fertilizer

Climate-Smart Kenari Nuts 1 Kg

Organic rich buttery taste and complete protein nuts originate from Maluku



Find our products

| [Click here to visit our shop!](#)

[APPLY NOW](#)

WE ARE HIRING

Be A Giftmaker

This position will assist in various do-business activities of su-re.coffee, su-re.cocoa and upcoming products. su-re.co offers a great opportunity to hone communication and design skills while developing green business in a real-world context with various organizations, communities, and government institutions. We are looking for a driven person with the ability to perform tasks independently.

Green Business Developer

Full Time

Sustainability Training Officer

Full Time

This position will support our Event and SDG Training programs both online and offline in Bali by organizing and designing learning programme for various age groups , and connect with stakeholders to support the learning programme.



su-re.college Programme

The su-re.college programme by su-re.co offers students and recent graduates the opportunity to gain direct practical experience with think-do-be operations related to climate change and sustainability issues. This program allows you to get the experience both online and onsite. For those who want to learn and get exposed to real projects related climate change and sustainability issues.

➔ THINK-RESEARCH



su-re.co offers the opportunity to hone research thinking and skills while applying it to a real world context engaging with various stakeholders such as governmental bodies, research institutes and local communities.

➔ DO-BUSINESS



su-re.co offers a great opportunity to hone communication, business and design skills while developing green business to a real-world context with various organizations, communities, and government institutions.

➔ DO-ENGINEERING



Through this programme, su-re.co offers the opportunities for young generation to exercise their communication and management skills to solve energy-related issues in poor and emerging economy context like Indonesia.

➔ BE-EVENT & TRAINING



su-re.co offers you the opportunity to apply your knowledge directly to our local and international partnership to community and improve transversal training and communication skills – communication, project management, public relations, etc.

HOW TO APPLY?



VISIT OUR WEBSITE

<https://www.su-re.co/su-re-college>



PAY ATTENTION TO

Eligibility & requirement



FILL IN THE FORM AND UPLOAD THE REQUIRED DOCUMENTS

<https://www.su-re.co/su-re-college>

NOTE

- Programme duration: 3-6 months
- Application will simply not be processed if there are missing documents and if instructions are not followed.
- Only shortlisted applicants will be contacted



SU-re.CO

Sustainability & Resilience

Established in 2015, su-re.co (Sustainability and Resilience) is an environmental Think-Do-Be-Tank based in Bali. Our vision is to be the giftmaker for the earth. To achieve this vision, we set a mission. We deliver well-thought outcomes because we need scientifically proven sustainable and resilient solutions. We work on think, do, be activities together.

Bali, 2023