

Giftmakers to the Earth

## Journey to The East: Delivering Gifts for Farmers



 BUILDING KNOWLEDGE  
OF THE YOUNG  
**We have Got Winners!**

**Cow Manure + Cocoa  
Pod Husk for Biogas,  
Does It Work?**

# Giftmakers.

**CEO** Dr. Takeshi Takama

**Researchers** Cynthia Juwita Ismail,  
Fabian Peri Wiropranoto, Siti Nurlaila  
Indriani, Bernadetha Efata

**Business and Event Officer** Oktavianna  
Winda, Pasthika Maya, Sarah Wibisono

**Engineering Officer** Bianca Angelique

**General Affairs Officer** Emilia Widodo

**Office Manager** Agustina Eny Widyastuti

**Business Mentee** Emilie Winter

**Engineering Mentee** Nalani Abigail  
Soegiono, Judith Tabeling

**Research Mentee** Laura Ballestin,  
Roudotul Jannah

## OPERATIONAL OFFICES

Jalan Dalem Gede No 25, Banjar Jempinis,  
Pererenan, Mengwi, Badung, Bali, Indonesia

info@su-re.co

+62 8123831727

# su-re.co news

Giftmakers to the Earth



# Table of Contents

**01** Think-Tank

**03** Do-Tank

**11** Be-Tank

**15** Gifts We Make

**18** Be A Giftmaker

THINK-TANK

# We have got winners!



**C**ongratulations to the winners! We have found winners for the Gender-Just Energy Transition in Indonesia International Report Design Competition.

Currently, su-re.co is working on the Gender-Just Energy Transition project to assess current narratives and policies available in Indonesia. As a result of this project, a report and policy brief will be drafted. This competition is a collaboration between su-re.co, TU Delft and the University of Sussex under the ADB Gender-Just Energy Transition project!

We are glad and thankful to receive numerous original and authentic artworks from the applicants. We are happy to announce Dylla Setyadji's art as the first winner, Miftahull Jannah's as the second and Inez as the third. All winners have received the rewards such as cash and su-re.co merchandise and special discount coupons for all su-re.co products. Especially for the first winner, we give a chance for Dylla to get involved in an international project as the graphic designer of the ADB report.

Dylla is an architecture student with some experience in working on illustration and sustainability projects.

## Join our THINK – Research Team



A full-time position for Researcher. Are you passionate about research and keen to further develop your skill? This opportunity is the one you're looking for!

su-re.co's THINK team works on creating well-thought gifts in the realm of climate change, renewable energy, and green business. Get the experience to work remotely in a multicultural environment and to work with international experts! Details information can be read on our website.

 **APPLY NOW**





from



excess



to



energy.





DO-TANK

## Cow Manure + Cocoa Pod Husk for Biogas, Does It Work?

After installing a biogas digester at Pak Paryanto's place in Gunung Kidul, Yogyakarta, we keep maintaining the progress of this biogas. This biogas is unique as usually, our biogas is fed with only cow manure. su-re.co, in collaboration with Universitas Gadjah Mada, analyzed the efficacy of cacao pod husk (CPH) and cow manure to feed the biogas. We conducted this analysis to turn waste into energy using the agricultural waste produced by Pak Paryanto's cacao farm.

On July 25, 2022, we visited the biogas to compare the laboratory experiment's result and the field's real condition. The result showed a difference between the laboratory analysis and the real condition because of differences in feedstock and process conditions. In the real condition, the feedstock used is 100% CPH and the biogas results in a good amount of gas production for cooking. The farmer said he could cook for 4-5 hours per day using the biogas stove!





Following the assessment, on August 26, 2022, we visited Gunung Kidul to meet three cacao farmers of the Sari Mulyo Farmers Community and two other cacao farmers outside this community. They live in the same village as Paryanto. As cacao farmers, they also produce cacao waste from their farms. It is around 2/3 of its production! So, biogas installation will help manage this agricultural waste and co-benefits the farmers. Moreover, based on our assessment, they had experience in organic and sustainable farming but never had any climate education training. So, we want to continue this 100% cacao waste biogas with these farmers through the next biogas installation.

“I am happy that this biogas was successfully installed, and I can use the stove and biogas produced for cooking. Since 2/3 of cacao production's weight is from cacao waste, this biogas helps us to utilize it and convert it into other benefits.”

-PARYANTO



# Farmers Install Biogas Digester for Their Community

Have you been to West Bali? We do, many times! This month, we installed several biogas digesters for farmers in Indonesia, including Bali. Our giftmakers Bianca and Emilie headed to Melaya, Jembrana, to teach the farmers how to install biogas.

The farmers' community in Ekasari Village is very active, creative, and eager to learn new things. The farmers installed 14 biogas by themselves! So, currently, we have installed more than 84 biodigesters in Indonesia!

Our giftmakers got some support from the farmers, who were excited to help install the biogas. This can be done easily, thanks to the design of our biogas that is made easy to transport and install.



Kadek Kudana is one of the cacao farmers who received a biogas digester. He even installed the biogas himself! Unlike the usual feedstock, Pak Kadek feeds his biogas with pig manure; surprisingly, it works very well! His biogas stove has produced a big blue fire that can last up to one hour daily. Other than that, Pak Kadek and the other farmers also have some bio-slurry that works as organic fertiliser.





DO-TANK

# Journey to The East: Delivering Gifts for Farmers

Hello from Flores!

Last month, our giftmakers - Bianca, Fabian, Okta, and Cynthia - came back to the land of coffee to deliver the gifts to farmers. Our giftmakers explained biogas technology at Climate Field School on August 29, and the farmers were very excited to install the biogas at their place. Five biogas digesters were installed for Koperasi Fa Masa, Leonardus Suri Leu, Kristoforus Rani, Maria Goreti, and Fabianus Deru. The installations were fun and impactful as we got help from the farmers, the cooperative member, and the students.



**"IF WE CAN TURN UNTREATED MANURE INTO ORGANIC FERTILIZERS, WE CAN SOLVE MANY PROBLEMS IN OUR VILLAGE."**

**FABIANUS DERU**






Leonardus is one of the coffee farmers who received the gifts for the earth. His dedication towards maintaining his coffee farm is commendable, harvesting the coffee cherries and having the green beans dried under the sun together with the coffee cooperative he leads called Prima Vera. His biggest inspiration to be a coffee farmer is his sister. His sister started the family coffee business when he was little. He thinks that if her sister is still alive, she will be proud of him for what he does for the coffee farmers' community. We also introduced him to the gas meter as an additional biogas monitoring system.



We are excited to hear good news on how farmers use biogas as a source of energy for cooking and bio-slurry as fertilizer. Stay tuned for the updates!

A woman with dark hair tied back, wearing a black short-sleeved shirt with white polka dots and white lace trim on the sleeves, stands in a lush green field. She is smiling and holding a handful of ripe, red and yellow coffee cherries in her hands. A blue and white woven basket is hanging from her shoulders. The background is filled with dense green foliage and coffee plants.

**“I think that without farmers we are all hungry. So I want young people, the younger generation to not be embarrassed to”**

**farm**  
Maria Goretti

*Coffee Farmer in Bajawa, Flores  
Participant of Climate Field School 2022*





DO-TANK

# From the Farm to Your Cup

## The entire coffee processing – from the farm to your cup



We met Maria Goretti, who owns an arabica coffee farm when we were in Bajawa. She showed us how she processes her arabica coffee in its best quality!

There are a few ways coffee cherries can be turned into green beans if you've ever seen the packaging for our su-re.coffee, you might have noticed that it says "fully-washed" and wondered what that means.

In the fully-washed process, the coffee pulp is removed by a machine, but the sticky layer called mucilage (sugar coating) stays on the bean. Next, the beans are washed and fermented for 18–36 hours to break down the mucilage, a sugary, slimy substance that covers the bean and gives it flavor, acidity, and body. The beans are then cleaned and dried. After that, the coffee needs to be roasted. Finally, you can brew a cup of Bajawa's finest as your morning coffee.



DO-TANK

# HUTAN COFFEE: A PROJECT FOR A GOOD CAUSE

Guessing by the name, do you know where this coffee project is based? You might think it is based in Indonesia, but you are not wrong ;) That is a good start! Let us tell you something about this cool project!

Hutan Coffee is a coffee project based in Japan. This project is established in 2021 and has become su-re.co's partner since then. Hutan Coffee and su-re.co has quite the same vision. Hutan Coffee works on delivering and supporting sustainable coffee from all over the world so that we will be able to drink coffee for



100 years to come. Hutan Coffee believes that we can continue to drink delicious coffee only when the nature that nurtures coffee remains rich and the lives of the people involved continue to be rich.

su-re.co climate-smart products are now getting some support from Hutan Coffee. They help market our su-re.coffee and su-re.coop kenari nuts in Japan. If you are in Japan and would like to try our climate-smart products and support a project for a good cause, visit [www.hutancoffee.base.shop/](http://www.hutancoffee.base.shop/) to shop!





## BE-TANK

# BUILDING KNOWLEDGE OF THE YOUNG

Did you know? Besides working with local farmers to install biogas and provide climate education, su-re.co also works with organizations to provide training for the young generation. su-re.co hosts several online and offline training on sustainability for young students from Japan. In collaboration with Tigermov Japan, we provide knowledge and experience for the students by visiting some organizations that focus on sustainability issues.

On 22-25 August, the students visited several NGOs and government institutions to get hands-on experience solving waste, agriculture, and energy issues. The students had a lecture from Plastic Xchange on the waste issue. To get more practical experience,

they visited 4Oceans to learn how this organization manages and gives value to plastic waste. The students also took an action to clean up Pererenan Beach from plastics. On the other topic, the students also explored an urban farm in AIAT Bali to learn about agriculture. They even harvested some eggplants. Yum!

The next day, the students also had experience in making chocolate from Primo, Tabanan. They also get a chance to visit a traditional bricks factory to know how energy is used in this process. We will be hosting more groups to explore sustainability issue in Bali this year, so make sure you keep updated!

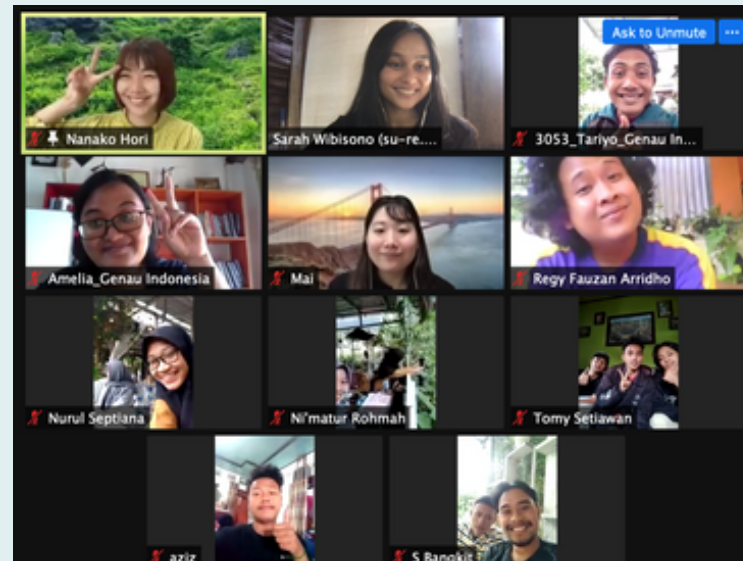


## BE-TANK

# From Tokyo to Petungkriyono

After conducting the Sustainable Tourism Workshop last May, Nanako received lots of good feedback from the participants, who enjoyed joining her workshop. Most of the participants were young generation in Petungkriyono, they requested us to conduct Waste Management Workshop since waste is also one of the main issues in Petungkriyono. They told us that local people have a habit to throw out waste into the river and burning the garbages. This information encouraged Nanako to share knowledge about the importance of waste management in Japan.

She explained the negative impacts of not managing waste and showed some examples of simple waste management practices. The participants were enthusiastic and active during the workshop. We ended the workshop with a discussion, and surprisingly we could connect with each participant to collaborate in managing waste as they shared valuable information.



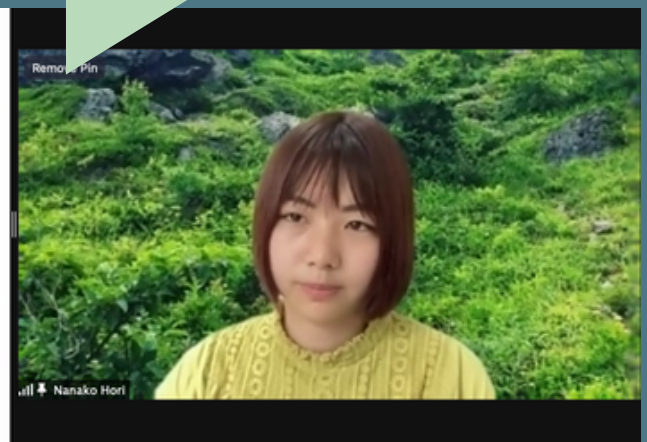
This workshop also encouraged the young participants to organize a community for waste management in Petungkriyono.

“Local people impressed me a lot through this workshop. Before this workshop, I've known about current waste management situation at the area. I was worried that people can't understand the importance of waste management. However, local people already know why they need to be aware about waste management. We discussed together how they can solve this problem. I'm so happy if I could motivate them to do waste management. Hope we work together and keep beautiful landscape!

Nanako Hori

## Why you can't burn plastic?

**Releasing Carbon Dioxide (CO<sub>2</sub>), which contributes to climate change and air pollution.**



BE-TANK

# Climate Field School in BAJAWA

---

Climate Field School (CFS) also known as Sekolah Lapang Iklim (SLI) in Bahasa Indonesia is one of su-re.co's programs in creating sustainable community especially on the issue of climate change. On August 29, 2022, we conducted Climate Filed School for coffee farmers in Bajawa. In this CFS, we were funded by GIZ (Deutsche Gesellschaft für Internationale Zusammenarbeit) under the IKI Small Grants Project, and worked with BMKG (Meteorological, Climatological, and Geophysical Agency) to deliver climate knowledge to the coffee farmers to help them understand

how the climate can influence their coffee, so they can manage their farms better and adapt to climate change.

The training was not done only by listening to lectures, but also by doing some group activities to understand their asses their problems in farming and exploring coffee farm to get some applicable knowledge. We were happy so see their enthusiasm in joining this program. We hope that the knowledge they got from this training can help them to manage their farm better and then they can share the knowledge to their surroundings. Stay tuned for more updates on CFS on our social media!



## BE-TANK

# The First Climate Field School in KINTAMANI

---

We are expanding our CFS in Bali! After doing several CFSs in Jembrana, in collaboration with BMKG Jembrana, we conducted a CFS for farmers in Kintamani, Bali, to build their knowledge and skill in understanding the climate. This CFS is conducted in collaboration between su-re.co under the IKI small grants project by GIZ, and BMKG (Meteorological, Climatological, and Geophysical Agency).

On August 11 2022, 19 farmers gathered in Pura Subak to receive some valuable information and training and do a field practice by exploring a coffee farm to get more practical knowledge. CFS in Kintamani invite coffee farmers to learn together so every farmer will be able to manage their farm better under the condition of climate change.

We are open for more collaborations in conducting climate field schools for farmers across Indonesia. Kindly reach us out by email at [info@su-re.co](mailto:info@su-re.co) to connect with our giftmakers!

# Gifts We Make

Get a taste of our climate-smart products from Indonesian farmers using organic fertilizer and clean energy from our biogas

## Climate-Smart su-re.cocoa

Bright and fruity character of 65% dark chocolate from Tabanan - Bali with coffee beans inside

50 gr    25 gr



## Climate-Smart su-re.coffee Bajawa

A fully washed and medium roasted Arabica from Bajawa, Flores with sweet aromatics, fruity notes, and long chocolate finish

250 gr    50 gr

## Climate-Smart su-re.coffee Kintamani

An aromatic and sweet flavor coffee with the taste of combination between fruit and herb. Fully washed and medium roasted Arabica from Kintaman, Bali

250 gr    50 gr



Find our products

[www.su-re.co/things-we-make/](http://www.su-re.co/things-we-make/)

# Gifts We Make

## *Climate-smart Cookies*

Get a taste of our climate-smart products from Indonesian farmers using organic fertilizer and clean energy from our biogas

### **su-re.coop Kenari Cookies 100 gr**

Sweet biscuit with a fairly soft and chewy texture and containing pieces of brittle Kenari Nuts. Our ingredients are natural and organic



### **su-re.cookies Gluten Free 100 gr**

Flat baked pieces that are made with gluten-free grains with su-re.cocoa chips inside. Our ingredients are organic and natural.



Find our products | [www.su-re.co/things-we-make/](http://www.su-re.co/things-we-make/)



## Organic Products

We also provide nuts, beans, and spices that is also supporting the development of sustainable agroforestry value chains

### Climate-Smart Dried Vanilla Beans 1 Kg

Organic grade-A prime vanilla beans from Jembrana-Bali offer beautiful floral aroma and cherry-chocolate like flavor



### Climate-Smart Cloves 1 Kg

100 % natural and high quality cloves from Leihitu Barat, no use of pesticides or fertilizer

### Climate-Smart Kenari Nuts 1 Kg

Organic rich buttery taste and complete protein nuts originate from Maluku



Find our products

[www.su-re.co/things-we-make/](http://www.su-re.co/things-we-make/)




[APPLY NOW](#)

WE ARE HIRING

# Be A Giftmaker

This position will assist in various do-business activities of su-re.coffee, su-re.cocoa and upcoming products. su-re.co offers a great opportunity to hone communication and design skills while developing green business in a real-world context with various organizations, communities, and government institutions. We are looking for a driven person with the ability to perform tasks independently.

## Green Business Developer

Full Time

## Researcher

Full Time

This position will support our current research projects (TIPPING+ and LANDMARC) such as writing papers, proposals, analyze data other relevant assistance, that is mainly focused on clean energy transition and land-use mitigation technology





# su-re.college Programme

The su-re.college programme by su-re.co offers students and recent graduates the opportunity to gain direct practical experience with think-do-be operations related to climate change and sustainability issues. This program allows you to get the experience both online and onsite. For those who want to learn and get exposed to real projects related climate change and sustainability issues.

## ➔ THINK-RESEARCH



su-re.co offers the opportunity to hone research thinking and skills while applying it to a real world context engaging with various stakeholders such as governmental bodies, research institutes and local communities.

## ➔ DO-BUSINESS



su-re.co offers a great opportunity to hone communication, business and design skills while developing green business to a real-world context with various organizations, communities, and government institutions.

## ➔ DO-ENGINEERING



Through this programme, su-re.co offers the opportunities for young generation to exercise their communication and management skills to solve energy-related issues in in poor and emerging economy context like Indonesia.

## ➔ BE-EVENT & TRAINING



su-re.co offers you the opportunity to apply your knowledge directly to our local and international partnership to community and improve transversal training and communication skills – communication, project management, public relations, etc.

### HOW TO APPLY?



#### VISIT OUR WEBSITE

<https://www.su-re.co/su-re-college>



#### PAY ATTENTION TO

Eligibility & requirement



#### FILL IN THE FORM AND UPLOAD THE REQUIRED DOCUMENTS

<https://www.su-re.co/su-re-college>

### NOTE

- Programme duration: 3-6 months
- Application will simply not be processed if there are missing documents and if instructions are not followed.
- Only shortlisted applicants will be contacted





SU-re.CO

Sustainability & Resilience

Established in 2015, su-re.co (Sustainability and Resilience) is an environmental Think-Do-Be-Tank based in Bali. Our vision is to be the giftmaker for the earth. To achieve this vision, we set a mission. We deliver well-thought outcomes because we need scientifically proven sustainable and resilient solutions. We work on think, do, be activities together.

Bali, 2022