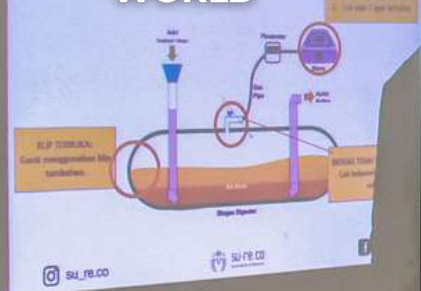


Giftmakers to the Earth

Empowering Farmers Through EbA Enhanced Climate Field Schools



IT'S THE CHOCOLATE
WORLD



TIPPING+ Partners Share
Case Studies and Insights

Logo of the Ministry of Agriculture and Forestry of Indonesia (Kementan RI) and other partners.

OLAH
LAPANG IKLIM
Climate Field Schools For Climate Resilience (EECLURa)
NUSA TENGGARA



Giftmakers.

CEO Dr. Takeshi Takama

Researchers Cynthia Juwita Ismail,
Fabian Peri Wiropranoto, Siti Nurlaila
Indriani, Imelda Magdalena

Office Manager Oktavianna Winda

Engineering Officer Bianca Angelique

Engineering Mentee Katharina Gruteser,
Lilli-Mercedes Kaminsky, Lucile Adjahi,
Bret Dow

General Affairs Officer Emilia Widodo

Admin Hanna Husna

Media and Event Officer Hendiliana
Dewi

OPERATIONAL OFFICES

Jalan Dalem Gede No 25, Banjar Jempinis,
Pererenan, Mengwi, Badung, Bali, Indonesia

info@su-re.co

+62 8123831727

A man with a mustache, wearing a blue button-down shirt, stands in a lush green field. He is looking slightly to his right. The background is filled with tall green plants and trees, creating a natural, outdoor setting.

Table of Contents

01 Think-Tank

04 Do-Tank

07 Be-Tank

14 Gifts We Make

16 Be A Giftmaker

THINK-TANK

TIPPING+ Partners Share Case Studies and Insights at General Assembly and Conference



Photo : su-re.co

The TIPPING+ project, which aims to understand the drivers and barriers of low-carbon transitions in coal and carbon-intensive regions, held its General Assembly and Conference in June 2023. The event brought together researchers and practitioners from different countries and regions to exchange knowledge and experiences on the challenges and opportunities of low-carbon transitions. su-re.co's CEO and Founder, Takeshi Takama and the researcher, Cynthia Ismail attended the event and shared their insights and findings with the other participants. Dr. Takama also had the honour of leading the final conference session

Overall, this conference was able to present the key findings of all the case studies on coal and carbon-intensive regions across Europe and beyond that examine the just transition in these regions. Stay tuned for the updates from TIPPING+!

**Join our
THINK –
Research Team**



A full-time position for Researcher. Are you passionate about research and keen to further develop your skill? This opportunity is the one you're looking for!

su-re.co's THINK team works on creating well-thought gifts in the realm of climate change, renewable energy, and green business. Get the experience to work remotely in a multicultural environment and to work with international experts! Details information can be read on our website.

 **APPLY NOW**



THINK-TANK


LANDMARC Stakeholders Interview

LANDMARC (Land-based Mitigation for Resilient Climate Pathways) is developing land-based climate change mitigation strategies in various national and regional contexts. We are particularly interested in how countries might collaborate, and whether technologies and learnings are transferable beyond national contexts. We interviewed a diverse group of people.

That means not only people with technical expertise but also people from NGOs, CSOs, the private sector, international organisations, government agencies and research institutions who work in those spaces. As a part of the project activities, we interviewed 12 stakeholders offline and online in June 2023. These stakeholders brought valuable insights and discussions during the interview.

Stakeholders involved in this interview have regional expertise in LMTs (afforestation, reforestation, peatland, agroforestry, crop management, Bioenergy with Carbon Capture Storage/BECCS, biochar, and biogas and compost). The narrative report of this interview will be utilized for developing regional and global scenarios and assessing potential LMTs upscale from the national to regional level.





THINK-TANK

su-re.co and SEI Conducted Baseline Survey for Climate Resilience

A

s part of the project "Ecosystem-based Adaptation (EbA)-Enhanced Climate Field School for Climate Resilience", su-re.co and Stockholm Environment Institute (SEI) conducted a baseline survey in two villages in

Bali, Indonesia: Wanagiri village in Buleleng Regency and Sukawana village in Bangli Regency. The survey assesses the current situation and needs of the farmers and communities in these villages and identifies the potential opportunities and challenges for implementing EbA practices.

The survey involved interviews with farmers. The topics covered included climate change impacts and adaptation, market access and value chains, eco-labelling and certification, agroforestry and biodiversity, biogas and renewable energy, and livelihoods and well-being.

The survey results will be used to design and deliver tailor-made Climate Field Schools (CFS) for the farmers in the two villages. The CFS will provide training and mentoring on EBA practices that can enhance the resilience of the farmers and their ecosystems to climate change and improve their livelihoods and income.

The CFS will also facilitate the exchange of knowledge and experiences among the farmers, as well as with other actors.

The project "EbA-Enhanced Climate Field School for Climate Resilience" is funded by the Global EbA Fund. Check out the stories from Climate Field Schools on the BE-TANK section!



From Waste to Energy: Sweet Potato Farm's New Biogas

Sweet Potato Farm located in Pangkung Tibah recently installed a biodigester on their project site in partnership with Dungbeetle and Sweet Potato Foundation. The installation was a success and several farmers were present to accompany us and were very interested in the process. The installation was eventful, especially for installing the solar panel for the gas meter.

Each step of the process was shared with the farmers who could take part and understand how it works. It was also the first installation for two of our mentees. The biodigester was filled with cow dung and we are now waiting for it to be ready to use!





Bambu Indah, the renowned Ubud resort, recently installed a biodigester facility, emphasizing its dedication to eco-friendly practices. Owned by John Hardy, founder of Green School Bali, the resort showcases its commitment through the biodigester, which utilizes cow manure, along with organic waste and food scraps, to generate fuel.

In partnership with Dungbeetle, the installation included a gas meter for monitoring production and usage. The biodigester is now operational, efficiently producing gas.

DO-TANK

Sustainable Innovation at Bambu Indah

The biodigester installation at Bambu Indah promotes a greener future and serves as an educational platform for guests and the community. By showcasing the benefits of organic waste digestion and sustainable energy production, Bambu Indah inspires responsible and eco-friendly practices.



Testing the Power of New Gas Meters & Digester Dimensions!

We have recently installed new gas meters, which play a vital role in our projects, particularly Dungbeetle, by providing precise data regarding biogas production and consumption. We conducted a controlled experiment in our office environment to validate their functionality. This experiment employed an empty water gallon with a strategically placed hole for connecting a hose to the gas meter and a sizable water bucket. Submerging the gallon in the water bucket resulted in a controlled and steady airflow, allowing the gas meter to accurately measure the released air volume. To ensure comprehensive data collection, we meticulously recorded the time of each dip and measured the volume of air released by the gallon, which was pre-determined and marked beforehand.



The test results revealed the high accuracy and reliability of the new gas meters, with only minor deviations detected during the initial run. Moreover, the experiment provided valuable insights for rectifying and enhancing the performance of the gas meters, such as ensuring proper sealing and alignment of the hose connector.

Following the confirmation of the accuracy of our newly installed gas meters, we proceeded with an additional experiment to ascertain the precise dimensions of our digester. In the second experiment, we systematically inflated and emptied one of our digesters three times, aiming to obtain the most reliable and conclusive outcome. However, the observed results did not align with our initial expectations regarding the digester's size. Consequently, we have taken the necessary measures to expand the digester's dimensions to ensure a volume of one cubic meter. This adjustment was duly validated through a subsequent third experiment, conducted using the same methodology employed in the second experiment.



Empowering Farmers in Wanagiri Through EbA Enhanced Climate Field School

On June 21st-22nd 2023, su-re.co, in collaboration with SEI and BMKG Staklim Jembrana, organized a transformative event in Wanagiri Village, Buleleng, to empower arabica coffee farmers through a training of trainers (ToT) and a Climate Field School (CFS) as part of our project, EECCLiRe, generously funded by Global EbA Fund. The primary objective of this initiative was to equip farmers with the necessary skills and knowledge to effectively adapt to and mitigate climate change using ecosystem-based approaches.

During the ToT sessions, agricultural extension workers were given the essential expertise to address the challenges posed by climate change in their communities. In parallel, the CFS focused directly on the farmers themselves. With immense enthusiasm, 15 farmers participated in the Climate Field School in Wanagiri. The CFS empowered farmers to know how to use climate data and adapt in the field in the changing climate.

We offered comprehensive training to extremely eager farmers and our collaborative effort aimed to equip Wanagiri farmers with the skills and knowledge needed to thrive in a changing climate. In the CFS, we introduce farmers to the climate change mitigation technology which is the biogas. The accomplishments of the Wanagiri Climate Field School program are expected to inspire farmers in the region to adopt sustainable farming practices and enhance their livelihoods.



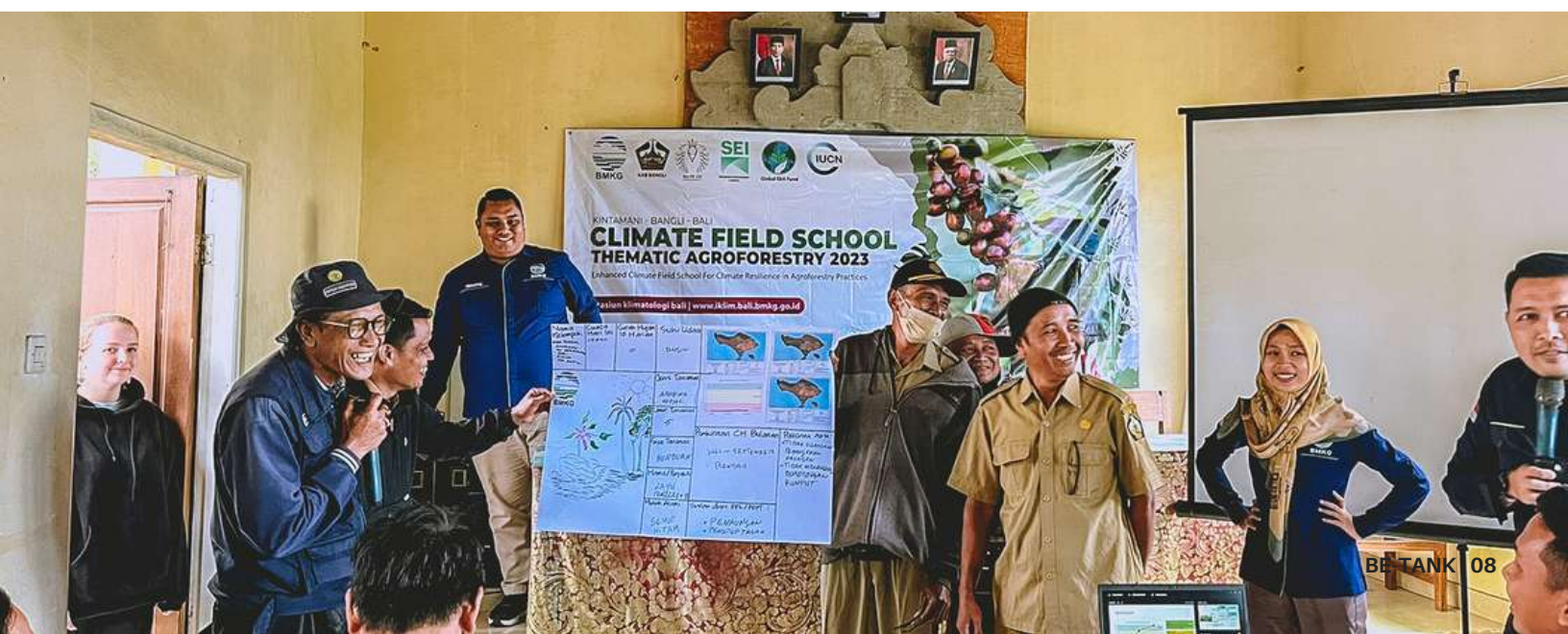
EECCLiRe: ToT and CFS Done in Sukawana

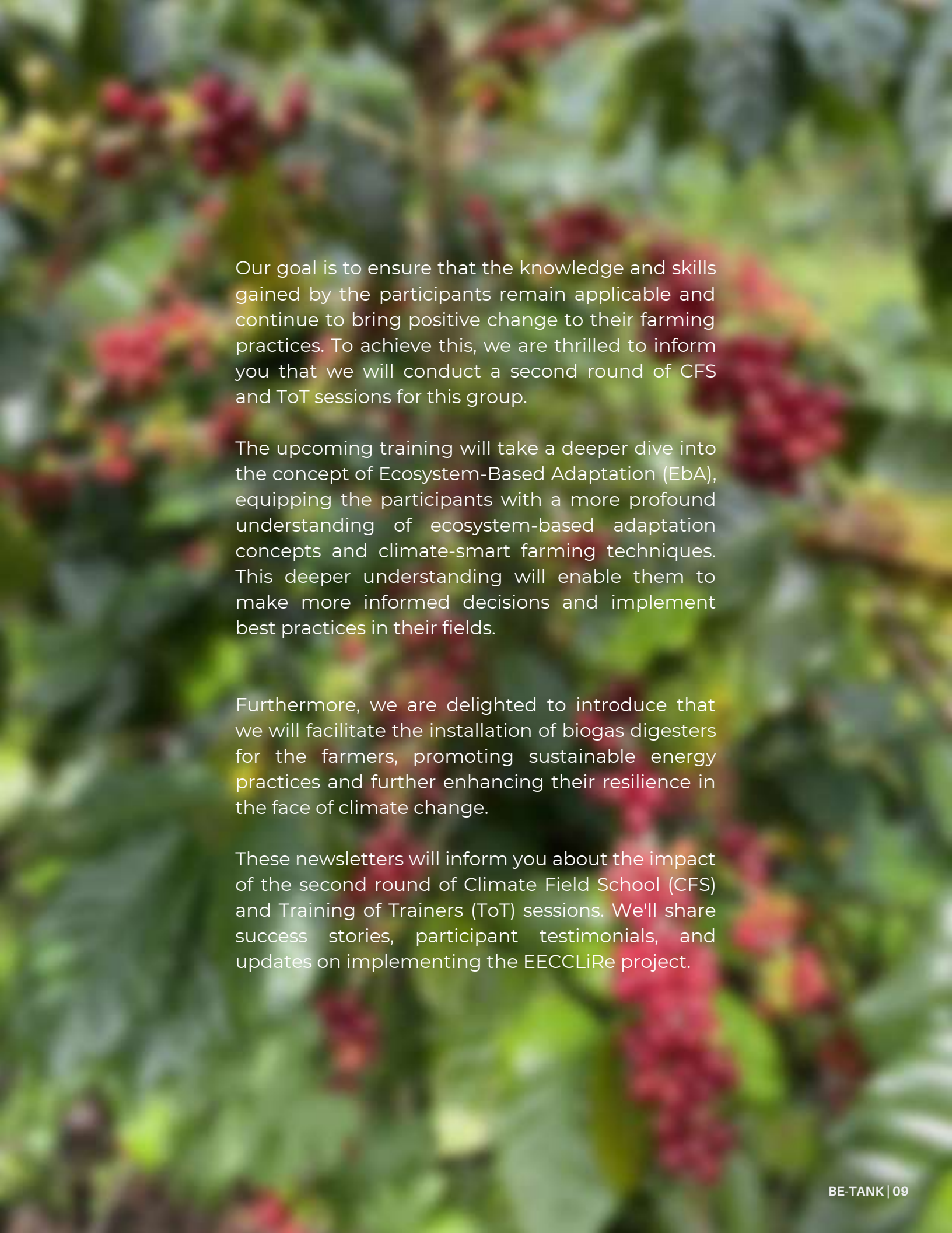
We were thrilled to be able to host another Training of Trainers (ToT) and Climate Field School (CFS) in Sukawana in June 2023 under the esteemed project EECCLiRe. The event was organized in collaboration with BMKG and SEI, with the participation of 25 agricultural extension workers and 24 farmers.

During this engaging session, our primary focus was empowering the participants to tackle the challenges posed by a rapidly changing climate. The ToT and CFS program covered various subjects, from climate science and practical applications to leveraging weather information for better decision-making, insights on ecosystem-based adaptations, eco-labelling discussion, and biogas as a mitigation and adaptation technology. Another intriguing aspect of our program was the

field session, where farmers went to inspect their coffee trees closely. During this hands-on experience, agricultural extension workers played a pivotal role in assisting the farmers by identifying any potential diseases or issues affecting the coffee trees. Armed with climate data from our previous sessions, the extension workers helped the farmers develop action plans tailored to the upcoming months.

As part of our commitment to continuous improvement, we also conducted pre and post-tests to assess the knowledge level of all participants before and after the training. We were overjoyed to witness a significant increase in knowledge among the participants after the program. This outcome reaffirms our belief in the effectiveness of our training and motivates us to continue our efforts in advancing sustainable agriculture practices.



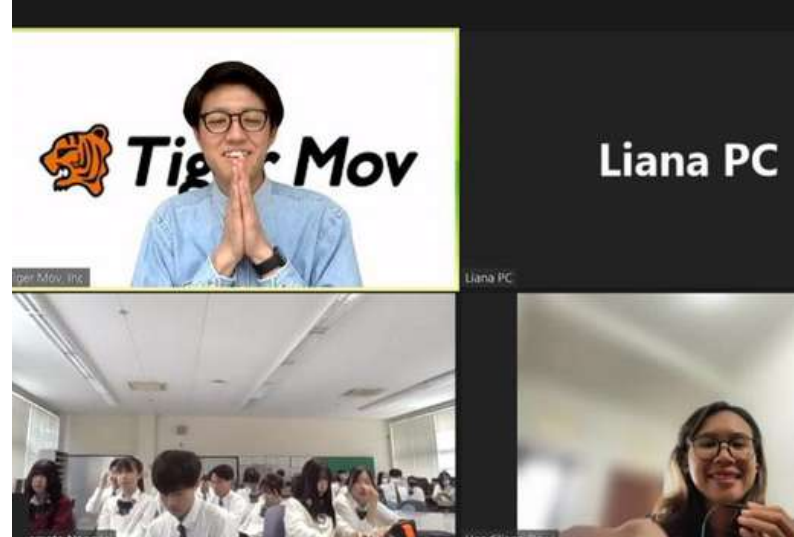
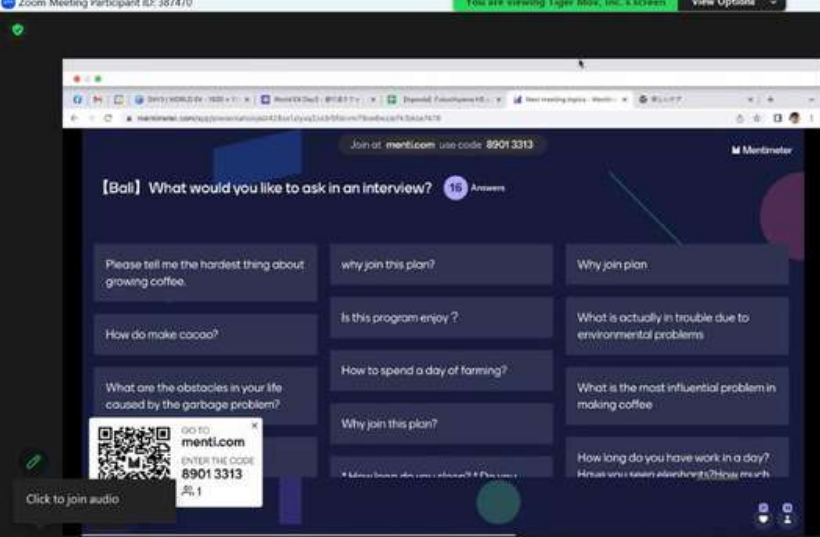


Our goal is to ensure that the knowledge and skills gained by the participants remain applicable and continue to bring positive change to their farming practices. To achieve this, we are thrilled to inform you that we will conduct a second round of CFS and ToT sessions for this group.

The upcoming training will take a deeper dive into the concept of Ecosystem-Based Adaptation (EbA), equipping the participants with a more profound understanding of ecosystem-based adaptation concepts and climate-smart farming techniques. This deeper understanding will enable them to make more informed decisions and implement best practices in their fields.

Furthermore, we are delighted to introduce that we will facilitate the installation of biogas digesters for the farmers, promoting sustainable energy practices and further enhancing their resilience in the face of climate change.

These newsletters will inform you about the impact of the second round of Climate Field School (CFS) and Training of Trainers (ToT) sessions. We'll share success stories, participant testimonials, and updates on implementing the EECCLiRe project.



BE-TANK

Coffee and Cacao: A Virtual Journey from Japan to Bali

What do coffee and cacao have in common? They are both tropical crops that grow in Bali, Indonesia, and they are both enjoyed by people worldwide. But how much do we know about the origins and production of these delicious products? That's what the students of Fukuchiya High School in Japan wanted to find out. They participated in an online session organized by su-re.co and Tiger Mov. They learned that farmers often receive low prices for their products, which makes it hard for them to improve their livelihoods.

The session was part of su-re.co's education program aims to raise awareness and inspire action on sustainability among students and teachers in Indonesia and abroad. su-re.co believes that education is a powerful tool for positive change for people and the planet. If you are interested in joining or hosting an online session with su-re.co, please visit their website or contact them at info@su-re.co.





BE-TANK

It's the Chocolate World: A Virtual Adventure with su-re.co and Teikyo Elementary School

Who doesn't love chocolate? It's sweet, creamy, and delicious. But do you know where chocolate comes from and how it's made? That's what the students of Teikyo Elementary School in Japan learned in an online program with su-re.co and Tigermov.

The program, called "It's the Chocolate World", took the students on a virtual journey to Jembrana, a district in Bali that produces high-quality cacao beans. They met Pak Ketut, a cacao farmer who works with su-re.co to grow organic cacao.

To help Pak Ketut and other cacao farmers, the students brainstormed and proposed innovative solutions, such as promoting fair trade, cacao houses, and Bali cacao through videos to be published online. They also appreciated and supported Pak Ketut and his passion for cacao

If you are interested in joining or hosting an online program with su-re.co, at info@su-re.co.

BE-TANK

Welcoming Dr. Hengky Chang from Nanyang Polytechnic

On June 15th 2023, we hosted Dr. Hengky Chang from Nanyang Polytechnic in Singapore. Dr. Chang's visit provided an opportunity to engage in insightful discussions about our programs, fostering knowledge exchange and mutual learning. During his visit, we had the pleasure of taking Dr. Chang to Jiwa Community Garden, where he had the chance to witness firsthand our innovative biogas digester in action. The visit provided a deeper understanding of our commitment to sustainable solutions and community empowerment.

We take immense pride in introducing our su-re.college program to our esteemed partners. This mentoring initiative has been a remarkable journey, empowering students and equipping them with the necessary tools to address pressing environmental challenges. We encourage students to explore innovative ideas and contribute to sustainable development by fostering a collaborative environment.

As we move forward, we remain steadfast in our commitment to nurturing young talents and strengthening partnerships with universities and academic institutions worldwide. The exchange of knowledge and expertise continues to drive our collective efforts to create a greener and more sustainable future.



大雨による洪水



降水量低下



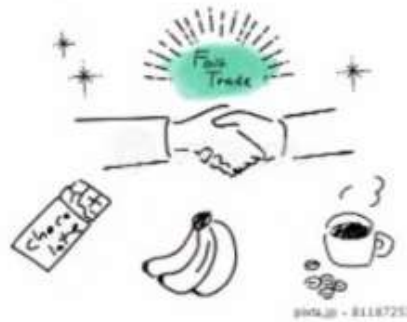
地球温暖化



害虫や菌



フェアトレード



さび病



BE-TANK

Clark Memorial High School Exploring Sustainability in Bali

At su-re.co and Tigermov's captivating sustainability sessions in Bali, students from Clark Memorial High School Japan embarked on an inspiring journey of discovery. After gaining insights into various sustainability issues, these enthusiastic young minds eagerly chose topics close to their hearts for further exploration.

In engaging group presentations, the students shared their motivations behind selecting their specific topics, which included waste management, water conservation, coffee and cacao, cooking stoves, and the crucial role of forestry in sustainability. The enthusiasm and passion these young change-makers displayed were commendable, reflecting their determination to contribute meaningfully to a sustainable future. Stay tuned to get updates on their progress!

Gifts We Make

Get a taste of our climate-smart products from Indonesian farmers using organic fertilizer and clean energy from our biogas

Climate-Smart su-re.cocoa

Bright and fruity character of 65% dark chocolate from Tabanan - Bali with coffee beans inside

50 gr 25 gr



Climate-Smart su-re.coffee

A fully washed and medium roasted Arabica from Bajawa, Flores with sweet aromatics, fruity notes, and long chocolate finish

250 gr 50 gr

Climate-Smart su-re.coffee Kintamani

An aromatic and sweet flavor coffee with the taste of combination between fruit and herb. Fully washed and medium roasted Arabica from Kintaman, Bali

250 gr 50 gr



Find our product
Click here to visit our shop!



Organic Products

We also provide nuts, beans, and spices that is also supporting the development of sustainable agroforestry value chains

Climate-Smart Dried Vanilla Beans 1 Kg

Organic grade-A prime vanilla beans from Jembrana-Bali offer beautiful floral aroma and cherry-chocolate like flavor



Climate-Smart Cloves 1 Kg

100 % natural and high quality cloves from Leihitu Barat, no use of pesticides or fertilizer

Climate-Smart Kenari Nuts 1 Kg

Organic rich buttery taste and complete protein nuts originate from Maluku



Find our products

| [Click here to visit our shop!](#)

[APPLY NOW](#)

WE ARE HIRING

Be A Giftmaker

This position will assist in various do-business activities of su-re.coffee, su-re.cocoa and upcoming products. su-re.co offers a great opportunity to hone communication and design skills while developing green business in a real-world context with various organizations, communities, and government institutions. We are looking for a driven person with the ability to perform tasks independently.

Green Business Developer

Full Time

Sustainability Training Officer

Full Time

This position will support our Event and SDG Training programs both online and offline in Bali by organizing and designing learning programme for various age groups , and connect with stakeholders to support the learning programme.





su-re.college Programme

The su-re.college programme by su-re.co offers students and recent graduates the opportunity to gain direct practical experience with think-do-be operations related to climate change and sustainability issues. This program allows you to get the experience both online and onsite. For those who want to learn and get exposed to real projects related climate change and sustainability issues.

➔ THINK-RESEARCH



su-re.co offers the opportunity to hone research thinking and skills while applying it to a real world context engaging with various stakeholders such as governmental bodies, research institutes and local communities.

➔ DO-BUSINESS



su-re.co offers a great opportunity to hone communication, business and design skills while developing green business to a real-world context with various organizations, communities, and government institutions.

➔ DO-ENGINEERING



Through this programme, su-re.co offers the opportunities for young generation to exercise their communication and management skills to solve energy-related issues in poor and emerging economy context like Indonesia.

➔ BE-EVENT & TRAINING



su-re.co offers you the opportunity to apply your knowledge directly to our local and international partnership to community and improve transversal training and communication skills – communication, project management, public relations, etc.

HOW TO APPLY?



VISIT OUR WEBSITE

<https://www.su-re.co/su-re-college>



PAY ATTENTION TO

Eligibility & requirement



FILL IN THE FORM AND UPLOAD THE REQUIRED DOCUMENTS

<https://www.su-re.co/su-re-college>

NOTE

- Programme duration: 3-6 months
- Application will simply not be processed if there are missing documents and if instructions are not followed.
- Only shortlisted applicants will be contacted



SU-re.CO

Sustainability & Resilience

Established in 2015, su-re.co (Sustainability and Resilience) is an environmental Think-Do-Be-Tank based in Bali. Our vision is to be the giftmaker for the earth. To achieve this vision, we set a mission. We deliver well-thought outcomes because we need scientifically proven sustainable and resilient solutions. We work on think, do, be activities together.

Bali, 2023