

Giftmakers to the Earth



Yokohama Sohei Explored Bali's Sustainability Issues

ENRICHING SUSTAINABLE PRACTICES
THROUGH COFFEE AGROFORESTRY

Introducing su-re.co Biogas
to Pererenan Village

Giftmakers.

CEO Dr. Takeshi Takama

Researchers Cynthia Juwita Ismail,
Fabian Peri Wiropranoto, Siti Nurlaila
Indriani

Office Manager Oktavianna Winda

Engineering Officer Bianca Angelique

Engineering Mentee Katharina Gruteser,
Lilli-Mercedes Kaminsky, Lucile Adjahi,
Bret Dow

Research Mentee Anouk Braun

Admin Hanna Husna

Media and Event Officer Hendiliana
Dewi

OPERATIONAL OFFICES

Jalan Dalem Gede No 25, Banjar Jempinis,
Pererenan, Mengwi, Badung, Bali, Indonesia

info@su-re.co

+62 8123831727

A man with a mustache, wearing a blue button-down shirt, stands in a lush green field. He is looking slightly to his right. The background is filled with tall green plants and trees, creating a natural, outdoor setting.

Table of Contents

01 Think-Tank

03 Do-Tank

06 Be-Tank

09 Gifts We Make

11 Be A Giftmaker

THINK-TANK

Enriching Sustainable Practices through Coffee Agroforestry



In a stride towards advancing sustainable practices and fostering global cooperation, su-re.co with CIFOR-ICRAF organized a visit to a coffee farm in the captivating landscapes of Kintamani, Bali. Hosting distinguished officials from Nepal's Ministry of Agriculture, renowned for their expertise in agroforestry, the expedition aimed to unravel the nuances of coffee agroforestry and spotlight the integration of innovative biogas digesters into the farming landscape.

Against the backdrop of Kintamani's picturesque landscapes, the team delved into the art of coffee agroforestry—a harmonious blend of coffee cultivation and native flora. Guided by local experts, we witnessed the symbiotic relationship between coffee plants and the thriving ecosystem, enhancing coffee quality while fostering biodiversity and sustainable land management. The exchange of insights between Balinese and Nepalese officials emphasized the global relevance of sustainable agriculture, igniting conversations that promise positive change on both ends.

This journey transcended boundaries, embodying su-re.co's commitment to nurturing global partnerships for a greener future. The insights gained, and connections forged during this expedition underscore the importance of collaborative efforts in shaping sustainable agriculture practices that will stand the test of time.

**Join our
THINK –
Research Team**



A full-time position for Researcher. Are you passionate about research and keen to further develop your skill? This opportunity is the one you're looking for!

su-re.co's THINK team works on creating well-thought gifts in the realm of climate change, renewable energy, and green business. Get the experience to work remotely in a multicultural environment and to work with international experts! Details information can be read on our website.

 **APPLY NOW**



THINK-TANK

Ecosystem Based Adaptation for Coastal Defence

In a dynamic pursuit of bolstering coastal defence mechanisms, a dedicated PhD student hailing from the esteemed Sustainability Science - Global Leadership Initiative (GPSS-GLI) program at The University of Tokyo is making significant strides in Ecosystem-based Adaptation (EbA).

From July 17th to 28th, 2023, the PhD student embarked on a crucial fieldwork expedition that took her across the stunning landscapes of Bali and the administrative heart of Indonesia, Jakarta. Throughout this period, she illuminated exchanges with key government institutions operating at the local level in Bali and the national echelons in Jakarta. These interactions were instrumental in

providing her with valuable insights into the current landscape of coastal defence strategies, the associated challenges, and the potential integration of EbA principles to enhance resilience.

A notable highlight of this endeavour was the active support extended by su-re.co. In a collaborative synergy between academia and practical application, su-re.co played an integral role in facilitating the collection of essential data. By orchestrating interviews, su-re.co enabled the PhD student to glean firsthand knowledge from pertinent stakeholders, enriching her research with on-the-ground perspectives.



from



excess



to



energy.



DO-TANK

Introducing su-re.co Biogas to Pererenan Village

The Head village of Pererenan and the district of Mengwi visited su-re.co office on July 4th 2023. It was our first time officially meeting and introducing our work. Through this discussion, they understand the types of work we do. We updated them regarding the Daiki Axis Johkasou that we will install in Jiwa Community Garden. They wanted to find an appropriate technology for their coastal village. They learned about various technologies from su-re.co, such as biogas digesters, biochar stoves, coffee briquettes, and solar dryers. They also saw how su-re.co practices sustainability in its office and farm.

The communal biogas system was especially interesting for the community, which uses organic waste to produce biogas for cooking, lighting, or heating. The Head village of Pererenan supported this project, as he thought it could make his village greener and innovative.

They also saw a plan for the Daiki Axis Johkasou system, which uses human excreta to produce biogas and treat wastewater. Su-re.co adapted this system for the local context and culture of Bali, and proposed to install it in a household toilet at Jiwa Community Garden. The visitors were interested in this system and wanted to support its implementation. Moreover, we explained about our small-scale biogas digester for household farmers, which uses animal manure to produce biogas and biofertilizer. The visitors were interested in this system and wanted to collaborate with su-re.co to install it in some farms in the village.

Keeping it Hot in the Cold: A Biogas Guide



Biogas digesters produce less gas in **cooler environments**.



Warmer spots such as crop areas can improve performance.



Commencing biogas **relocation**.



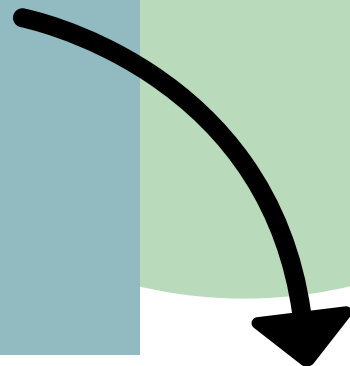
Setting up **greenhouse structure**.



5



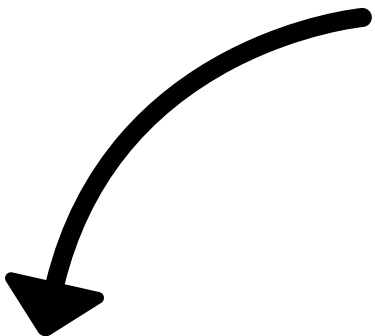
Tying the greenhouse structure for extra strength and security.



6



Cover the sheet over the structure.



7



Finally, **fasten** the greenhouse, create a hole for the **inlet** and the biogas is ready to face cool temperatures!



BE-TANK

Empowering Tomorrow's Changemakers: Denen Chofu HS

The online programme with Denen Chofu High School in Japan began on June 16th 2023 in collaboration with TigerMov. The class began by learning about Balinese culture and zoomed in on a big idea: the Sustainable Development Goals (SDGs). We connected these goals to the important problems that Bali is facing, like keeping the environment clean and healthy.

The students in this program are doing something amazing. They are not just learning – they are figuring out how to think about the future and how to solve problems.

As time goes on, each student will pick something they care about. Some will look at waste, others will think about saving energy or keeping water clean, and others will explore how to care for forests.

We are super excited about what is coming up. The students are working hard on their projects. They'll show what they learned and how they want to make things better.

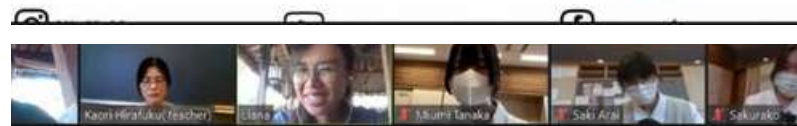
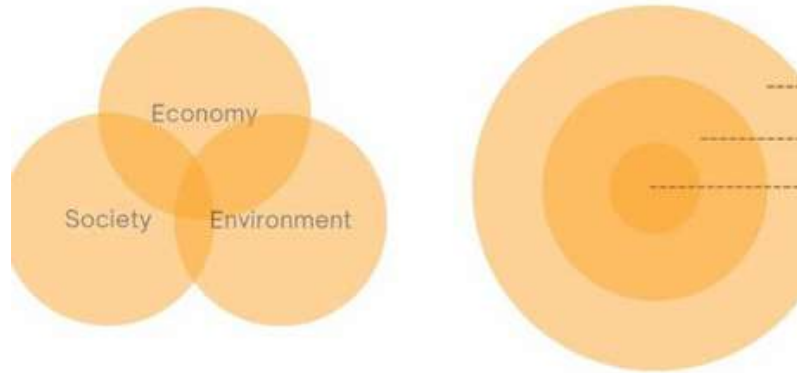
Stay tuned for more updates on how these young sustainability stars are changing the game.



Changes in Sustainability

UNCED, Rio 1992

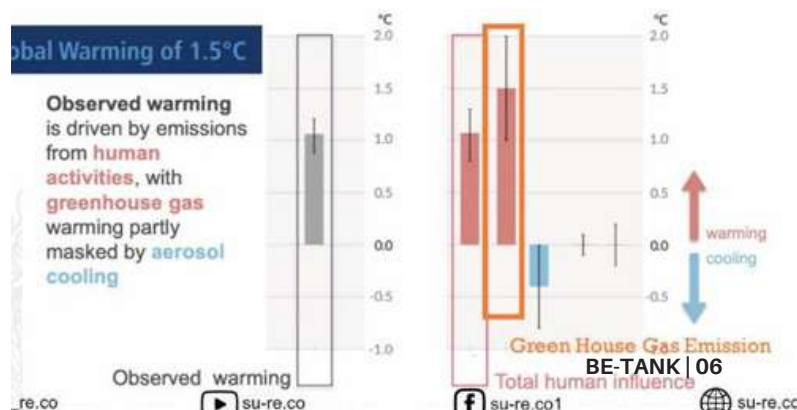
Giddings, Hoppwood & O'Brien, 2000



MDGs vs SDGs

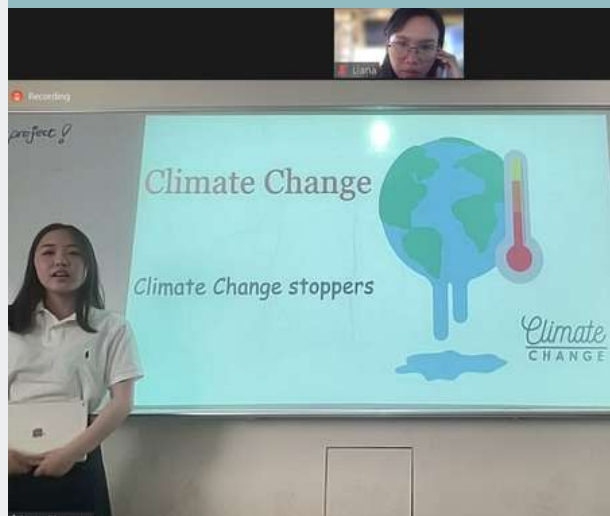


What Causing Extreme Climate Events



Seijo Gakuen HS Supports Coffee Farmes

The project with Seijo Gakuen High School in Japan kicked off with great excitement. Starting on July 24th 2023, the online program focuses on coffee. The students also looked at the problems Bali faces, such as too much trash on its beaches and the difficulties of balancing tourism with taking care of the environment. Farming was another important topic. In the first classes, students talked with coffee farmer to learn how they farm in sustainable ways.



Later on, students could pick their favourite topics to learn more about. All students were interested in coffee farming. In only a few days, some cool ideas came up from various perspectives like climate change, marketing, income, etc. This shows the students' dedication to finding smart solutions for Bali's problems.



Yokohama Sohei Students Explored Bali's Sustainability Issues

BE-TANK

We recently wrapped up the impactful Yokohama Sohei Visit—an enlightening educational event spanning ten days from July 24th to 31st, 2023. The initiative hosted 18 students and two junior and senior high school teachers, focusing on waste management and water conservation. The event left an enduring impression on the young participants through a blend of interactive activities, NGO interactions, government engagements, and community service like mangrove cleanups.

Guided by curiosity, the attendees embarked on an educational journey beyond classroom confines. They explored NGOs, interacted with governmental bodies, and delved into the tapestry of stakeholders striving for a greener world. The hands-on mangrove cleanup underscored the importance of

community involvement in preserving our natural resources. The event culminated in a final presentation where participants shared their insights and action plans, highlighting the potential of youth as agents of change.

The Yokohama Sohei Visit exemplified su-re.co's commitment to nurturing informed and proactive eco-leaders. It echoed the belief that sowing seeds of awareness today yields a harvest of sustainable practices tomorrow. Beyond its ten-day span, the event's impact resonates in the participants' attitudes and actions, emphasizing the pivotal role of education in driving transformation.

If you are interested in joining our SDG Training program, contact info@su-re.co!

Gifts We Make

Get a taste of our climate-smart products from Indonesian farmers using organic fertilizer and clean energy from our biogas

Climate-Smart su-re.cocoa

Bright and fruity character of 65% dark chocolate from Tabanan - Bali with coffee beans inside

50 gr 25 gr



Climate-Smart su-re.coffee

A fully washed and medium roasted Arabica from Bajawa, Flores with sweet aromatics, fruity notes, and long chocolate finish

250 gr 50 gr

Climate-Smart su-re.coffee Kintamani

An aromatic and sweet flavor coffee with the taste of combination between fruit and herb. Fully washed and medium roasted Arabica from Kintaman, Bali

250 gr 50 gr



Find our product
Click here to visit our shop!



Organic Products

We also provide nuts, beans, and spices that is also supporting the development of sustainable agroforestry value chains

Climate-Smart Dried Vanilla Beans 1 Kg

Organic grade-A prime vanilla beans from Jembrana-Bali offer beautiful floral aroma and cherry-chocolate like flavor



Climate-Smart Cloves 1 Kg

100 % natural and high quality cloves from Leihitu Barat, no use of pesticides or fertilizer

Climate-Smart Kenari Nuts 1 Kg

Organic rich buttery taste and complete protein nuts originate from Maluku



Find our products

| [Click here to visit our shop!](#)



su-re.college Programme

The su-re.college programme by su-re.co offers students and recent graduates the opportunity to gain direct practical experience with think-do-be operations related to climate change and sustainability issues. This program allows you to get the experience both online and onsite. For those who want to learn and get exposed to real projects related climate change and sustainability issues.

➞ THINK-RESEARCH



su-re.co offers the opportunity to hone research thinking and skills while applying it to a real world context engaging with various stakeholders such as governmental bodies, research institutes and local communities.

➞ DO-BUSINESS



su-re.co offers a great opportunity to hone communication, business and design skills while developing green business to a real-world context with various organizations, communities, and government institutions.

➞ DO-ENGINEERING



Through this programme, su-re.co offers the opportunities for young generation to exercise their communication and management skills to solve energy-related issues in in poor and emerging economy context like Indonesia.

➞ BE-EVENT & TRAINING



su-re.co offers you the opportunity to apply your knowledge directly to our local and international partnership to community and improve transversal training and communication skills – communication, project management, public relations, etc.

HOW TO APPLY?



VISIT OUR WEBSITE

<https://www.su-re.co/su-re-college>



PAY ATTENTION TO

Eligibility & requirement



FILL IN THE FORM AND UPLOAD THE REQUIRED DOCUMENTS

<https://www.su-re.co/su-re-college>

NOTE

- Programme duration: 3-6 months
- Application will simply not be processed if there are missing documents and if instructions are not followed.
- Only shortlisted applicants will be contacted



SU-re.CO

Sustainability & Resilience

Established in 2015, su-re.co (Sustainability and Resilience) is an environmental Think-Do-Be-Tank based in Bali. Our vision is to be the giftmaker for the earth. To achieve this vision, we set a mission. We deliver well-thought outcomes because we need scientifically proven sustainable and resilient solutions. We work on think, do, be activities together.

Bali, 2023