

Giftmakers to the Earth

LANDMARC Regional Workshop in Bangkok



A RECAP OF THE AGRICULTURE
WORKSHOP AT JOISAI JUNIOR
AND HIGH SCHOOL

Going Green with
Made Darsana from
Wanagiri, Bali



Giftmakers.

CEO Dr. Takeshi Takama

Researchers Cynthia Juwita Ismail,
Fabian Peri Wiropranoto, Siti Nurlaila
Indriani, Tri Atmaja, Geby Febriany

Office Manager Oktavianna Winda

Engineering Officer Bianca Angelique

Engineering Mentee Lucile Adjahi,
Thando Ray

Research Mentee Anouk Braun

Admin Hanna Husna

Media and Event Officer Hendiliana
Dewi

Business and Event Officer Ary Purnami

OPERATIONAL OFFICES

Jalan Dalem Gede No 25, Banjar Jempinis,
Pererenan, Mengwi, Badung, Bali, Indonesia

info@su-re.co

+62 8123831727

su-re.co news

Giftmakers to the Earth

A man with a mustache, wearing a blue button-down shirt, stands in a lush green field. He is looking slightly to his right. The background is filled with tall, leafy plants, possibly banana trees, under a bright sky.

Table of Contents

01 Think-Tank

04 Do-Tank

07 Be-Tank

10 Gifts We Make

13 Be A Giftmaker

LANDMARC Regional Workshop in Bangkok



On the 19th of October 2023, LANDMARC Horizon2020 team members from the SEI—Stockholm Environment Institute, Indonesia case study (su-re.co), and Vietnam case study (CIAT) held a very successful in-person regional workshop in Bangkok, Thailand, with a group of experts from the agriculture, carbon market, finance, biochar, forestry, and other land-use sectors. Around 25 participants, facilitators, and rapporteurs joined the discussion. One of su-re.co research team, Indri, went to Bangkok together with several Indonesian stakeholders who were invited.



This regional workshop was all about how to realize the Asian region's ambition to encourage the use of more land-based mitigation technologies and practices (LMTs) in agriculture, forestry, and other land-use sectors. The session started at 9:00 a.m. and had a wrap-up session at dinner. The LMTs we discussed included agroforestry, afforestation and reforestation, reduced tillage, bioenergy carbon capture and storage (BECCS), biochar, and forest management.

The first session had a project introduction, climate ambition, and a climate modelling presentation. Then, we had two break-out group discussions to discuss regional climate ambition and regional engagement. The last session presented all findings from the three break-out groups and synthesised all discussions. Also, Aneta Nikolova from UNESCAP presented nature-based solutions in the Asia Pacific.

THINK-TANK

su-re.co Spotlights Climate Services for Coffee Industry at BMKG's International Workshop on Climate Variability



Dr. Takeshi Takama, the CEO of su-re.co, played a pivotal role as a speaker in the International Workshop on Climate Variability and Climate Services, an event hosted by BMKG in Bali. On the 17th of November 2023, Dr. Takama delivered an insightful presentation on "Climate Services for the Coffee Industry."

The workshop, convened with the overarching objective of enhancing participants' comprehension and capacity, especially among the human resources of BMKG, delved into the latest developments in climate issues and services. Dr. Takama's expertise in the realm of climate services, particularly as it relates to the coffee industry, added valuable perspectives to the discourse.

As a forum dedicated to advancing understanding and knowledge exchange, the International Workshop on Climate Variability and Climate Services catalyzed fostering collaboration and empowering participants with the most up-to-date insights in the field of climate science. Dr. Takama's contribution further underscored su-re.co's commitment to driving positive change and addressing critical issues in climate variability.

Join our
**THINK –
Research Team**



A full-time position for Researcher. Are you passionate about research and keen to further develop your skill? This opportunity is the one you're looking for!

su-re.co's THINK team works on creating well-thought gifts in the realm of climate change, renewable energy, and green business. Get the experience to work remotely in a multicultural environment and to work with international experts! Details information can be read on our website.

 **APPLY NOW**

THINK-TANK

Renewable Energy Capacity Building in Lombok



In October 2023, we supported four training programs in Lombok as part of the project by New Energy Nexus to create a Center of Excellence (CoE) for Renewable Energy.

Participants from different backgrounds and parts of the Islands come together to partake in the training program. Fishermen and farmers learned about various topics ranging from renewable energy to marketing, equipping participants with key knowledge to advance their businesses and activities.



The Lombok capacity building program is a pilot implementation that will create a ripple effect in other parts of Indonesia. It is hoped that entrepreneurship in sustainability can be fostered and maintained throughout this program.



from



excess



to



energy.



DO-TANK

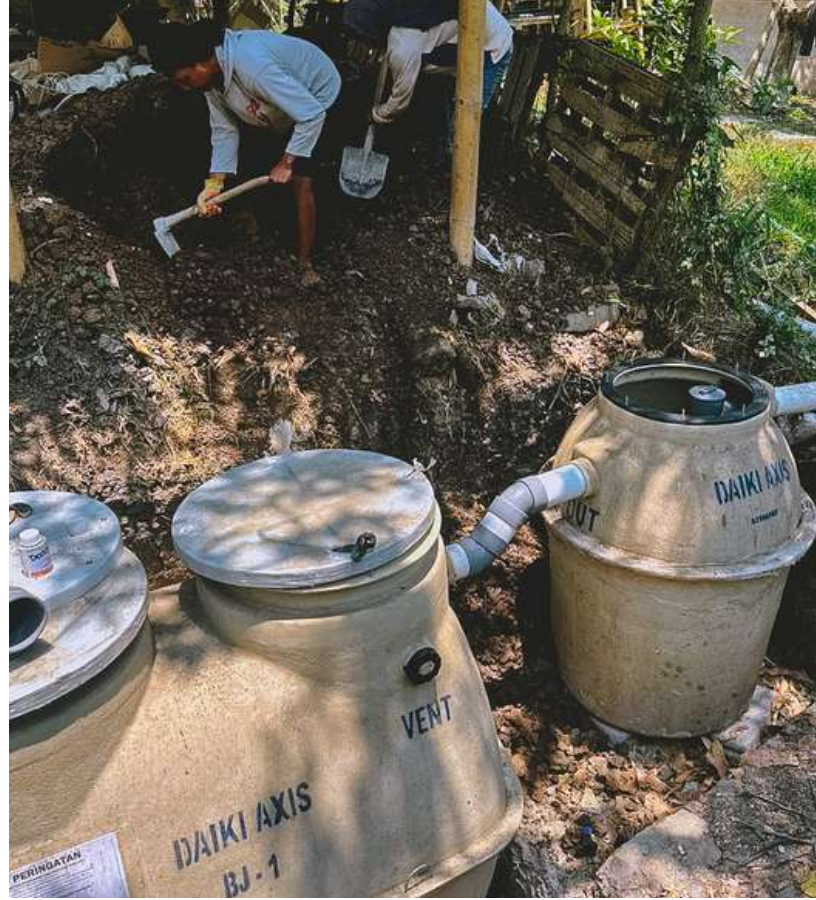
su-re.co Showcases Environmental Initiatives at National Student Championship 2023

su-re.co participated in the National Tourism Student Championship 2023, a prestigious event hosted by the Institut Pariwisata dan Bisnis Internasional (IPBI). Adding a vibrant touch to the occasion, su-re.co set up an engaging booth to showcase our environmental projects and innovative climate-smart products.

Amidst the lively atmosphere of the championship, su-re.co took the opportunity to share insights into our

commitment to sustainability and environmental conservation. The booth became a hub of information, allowing attendees to learn about su-re.co's initiatives and explore a range of products designed with a climate-smart approach.

By actively engaging with participants and visitors, su-re.co not only contributed to the overall energy of the event but also fostered awareness and understanding of the intersection between sustainable practices and the tourism industry. This collaborative effort at the National Tourism Student Championship exemplifies su-re.co's dedication to promoting eco-friendly solutions and inspiring positive change within the realm of tourism and beyond.



DO-TANK

Installing Jokhasou at Jiwa Community Garden

In collaboration with Daiki Axis, we have undertaken and implemented a new project at Jiwa Community Garden. A few years ago, we came into contact with Jiwa Garden and entered the life of Ibu Gede, the farmer there.

Today, we have implemented the Jokhasou developed by Daiki Axis for treating wastewater. The special feature of this project is that besides treating the wastewater from the toilets and showers to avoid polluting the river water, we have placed a biogas tank upstream of the Jokhasou.

The wastewater will therefore first be discharged into the biogas tank and the remaining liquid waste will be treated in the Jokhasou. This project, initially conceived on a domestic scale, is now being extended to a larger scale.

Our collaboration with Daiki Axis is more than a partnership. It's a combination of their expertise and our community spirit. So far, the system has been launched and we can't wait to see the results!

The installation of the biogas and wastewater treatment system is not just a project, it's a new step in our sustainable and environmental approach.

DO-TANK

Going Green with Made Darsana from Wanagiri, Bali

As part of the EECLIRE project, 3 of our gifmakers went to Wanagiri in northern Bali to install a biodigester at Pak Made Darsana. Wanagiri is an area often covered in clouds, so it was a challenge to get our technology working in this region.

Bianca, Thando and Lucile, with the help of our champion farmer, Pak Made Darsana, dug, installed, filled and inaugurated this new digester! The biodigester is mainly filled with cow and pig manure and connected to a newly installed cooker. A smart gas meter has also been installed to ensure regular monitoring.

It's another step towards green, sustainable energy! We hope this biodigester will improve their quality of life and help them use natural fertiliser!

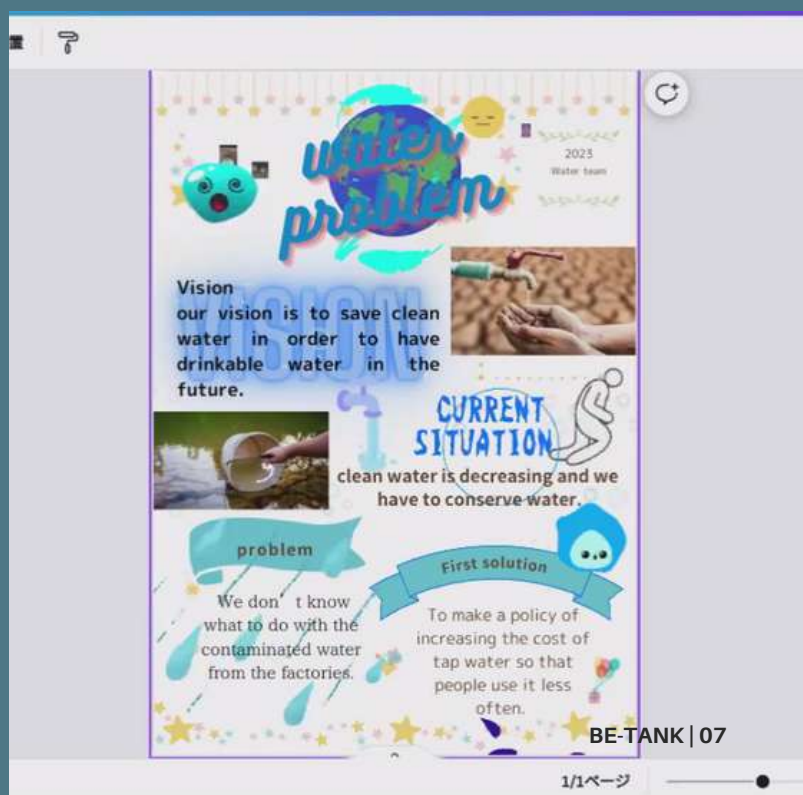
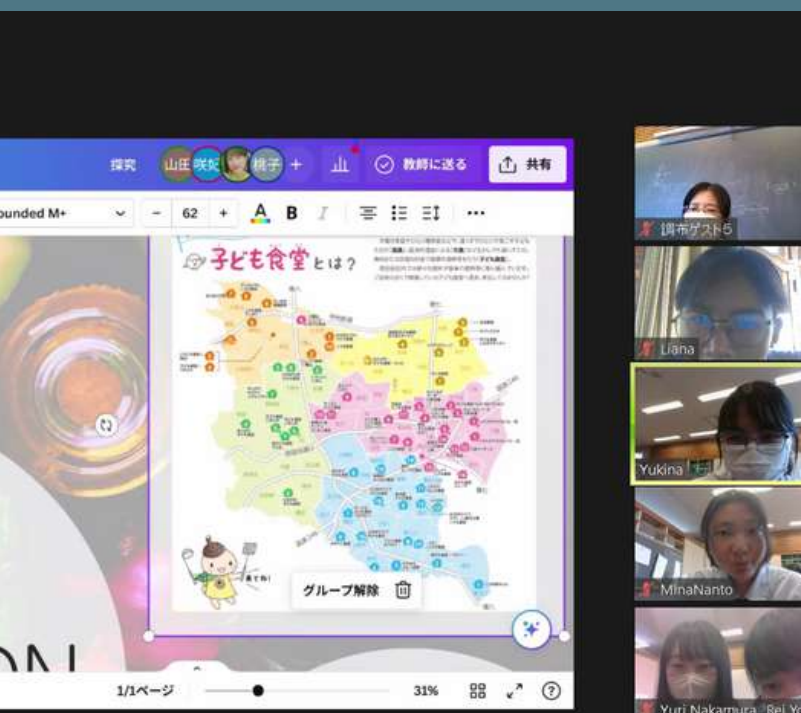


Denen Chofu High School's Inspiring Journey through SDGs Lessons and Environmental Action

Denen Chofu High School in Japan completed a transformative journey through the 10-series online SDGs lessons orchestrated by su-re.co and Tigermov. The enthusiastic participation of the girls from Denen Chofu resonated in each lesson as they eagerly absorbed knowledge about Sustainable Development Goals (SDGs) and environmental issues.

Even during the summer break, their passion for environmental stewardship remained unwavering. The students undertook a commendable initiative by crafting insightful short articles focusing on the pressing environmental challenges within their localities. Topics ranged from waste management to food waste, energy consumption, and water issues.

These individual explorations and articles served as the foundation for their final project, where the students identified key environmental concerns and proposed visionary solutions. Their culminating vision encompassed tangible actions that could be implemented to achieve sustainable development's overarching goal. The dedication and creativity displayed by the Denen Chofu High School students underscore the transformative impact of education in fostering environmental awareness and inspiring real-world initiatives.





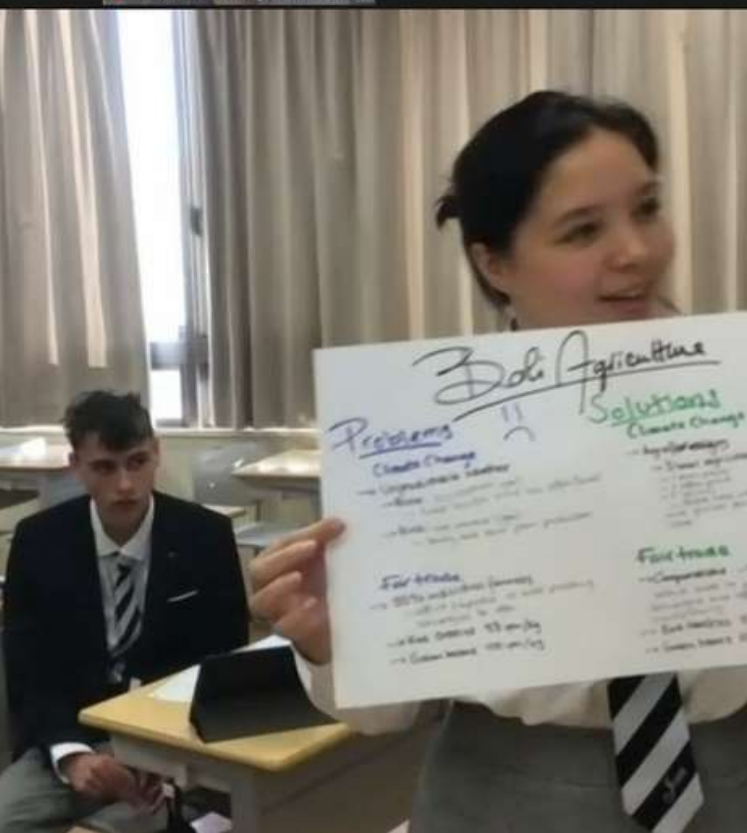
BE-TANK

A Recap of the Agriculture Workshop at Joisai Junior and High School

su-re.co and Tigermov recently played a pivotal role as one of hosts for a dynamic three-day online workshop at Joisai Junior and High School in Japan. The workshop garnered enthusiastic participation from students from various countries, all converging with a shared interest in the captivating realm of agriculture.

This engaging workshop delved into theoretical aspects and provided a unique opportunity for participants to interact directly with seasoned professionals. The event highlighted insightful sessions where students could connect with coffee and cacao farmers. This open forum allowed the participants to pose pertinent questions, gaining valuable insights into the intricacies of agriculture from those directly involved in the field.

As the workshop drew to a close, students eagerly presented the culmination of their analyses. The final day served as a platform for them to showcase their newfound knowledge. The diverse topics covered throughout the workshop and hands-on interactions with farmers undoubtedly enriched the participants' understanding of agriculture and fostered a global perspective on sustainable farming practices.





Ecosystem-Based Adaptation



BE-TANK

Global Perspectives on Sustainability: su-re.co's Virtual Lecture Unites Master's Students around Asia

In October 2023, su-re.co had the distinct privilege of hosting a compelling online lecture on sustainability for the esteemed students of Udayana University. This enlightening session transcended geographical boundaries, drawing participation from master's degree students from diverse countries.

The virtual lecture served as a dynamic platform for exchanging ideas and insights, fostering a rich intercultural dialogue on sustainability. Students, united by a shared passion for environmental stewardship, engaged with the comprehensive content presented by su-re.co members.

The global perspective brought forth by participants from different corners of the world added a unique dimension to the discourse, enriching the learning experience for everyone involved.

Gifts We Make

Get a taste of our climate-smart products from Indonesian farmers using organic fertilizer and clean energy from our biogas

Climate-Smart su-re.cocoa

Bright and fruity character of 65% dark chocolate from Tabanan - Bali with coffee beans inside

50 gr 25 gr



Climate-Smart su-re.coffee Bajawa

A fully washed and medium roasted Arabica from Bajawa, Flores with sweet aromatics, fruity notes, and long chocolate finish

250 gr 50 gr

Climate-Smart su-re.coffee Kintamani

An aromatic and sweet flavor coffee with the taste of combination between fruit and herb. Fully washed and medium roasted Arabica from Kintaman, Bali

250 gr 50 gr



Find our products

[Click here to visit our shop!](#)

Gifts We Make

Climate-smart Cookies

Get a taste of our climate-smart products from Indonesian farmers using organic fertilizer and clean energy from our biogas

su-re.coop Kenari Cookies 100 gr

Sweet biscuit with a fairly soft and chewy texture and containing pieces of brittle Kenari Nuts. Our ingredients are natural and organic



su-re.cookies Gluten Free 100 gr

Flat baked pieces that are made with gluten-free grains with su-re.cocoa chips inside. Our ingredients are organic and natural.



Find our products | [Click here to visit our shop!](#)

Organic Products

We also provide nuts, beans, and spices that is also supporting the development of sustainable agroforestry value chains

Climate-Smart Dried Vanilla Beans 1 Kg

Organic grade-A prime vanilla beans from Jembrana-Bali offer beautiful floral aroma and cherry-chocolate like flavor



Climate-Smart Cloves 1 Kg

100 % natural and high quality cloves from Leihitu Barat, no use of pesticides or fertilizer

Climate-Smart Kenari Nuts 1 Kg

Organic rich buttery taste and complete protein nuts originate from Maluku



Find our products | [Click here to visit our shop!](#)

[APPLY NOW](#)

WE ARE HIRING

Be A Giftmaker

This position will assist in various do-business activities of su-re.coffee, su-re.cocoa and upcoming products. su-re.co offers a great opportunity to hone communication and design skills while developing green business in a real-world context with various organizations, communities, and government institutions. We are looking for a driven person with the ability to perform tasks independently.

Green Business Developer

Full Time

Researcher

Full Time

This position will support our current research projects (e.g., TIPPING+ and LANDMARC) such as writing papers, proposals, analyze data other relevant assistance, that is mainly focused on clean energy transition and land-use mitigation technology





su-re.college Programme

The su-re.college programme by su-re.co offers students and recent graduates the opportunity to gain direct practical experience with think-do-be operations related to climate change and sustainability issues. This program allows you to get the experience both online and onsite. For those who want to learn and get exposed to real projects related climate change and sustainability issues.

➔ THINK-RESEARCH



su-re.co offers the opportunity to hone research thinking and skills while applying it to a real world context engaging with various stakeholders such as governmental bodies, research institutes and local communities.

➔ DO-BUSINESS



su-re.co offers a great opportunity to hone communication, business and design skills while developing green business to a real-world context with various organizations, communities, and government institutions.

➔ DO-ENGINEERING



Through this programme, su-re.co offers the opportunities for young generation to exercise their communication and management skills to solve energy-related issues in in poor and emerging economy context like Indonesia.

➔ BE-EVENT & TRAINING



su-re.co offers you the opportunity to apply your knowledge directly to our local and international partnership to community and improve transversal training and communication skills – communication, project management, public relations, etc.

HOW TO APPLY?



VISIT OUR WEBSITE

<https://www.su-re.co/su-re-college>



PAY ATTENTION TO

Eligibility & requirement

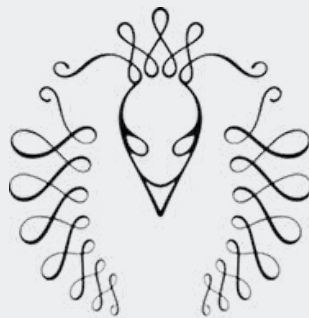


FILL IN THE FORM AND UPLOAD THE REQUIRED DOCUMENTS

<https://www.su-re.co/su-re-college>

NOTE

- Programme duration: 3-6 months
- Application will simply not be processed if there are missing documents and if instructions are not followed.
- Only shortlisted applicants will be contacted



SU-re.CO

Sustainability & Resilience

Established in 2014, su-re.co (Sustainability and Resilience) is an environmental Think-Do-Be-Tank based in Bali. Our vision is to be the giftmaker for the earth. To achieve this vision, we set a mission. We deliver well-thought outcomes because we need scientifically proven sustainable and resilient solutions. We work on think, do, be activities together.

Bali, 2022